



TOYOTA

*Move your world*

# VIOS



**DEFY  
EXPECTATIONS**

# **DEFY WITH A BOLD NEW PRESENCE**



Defy perceptions. Defy labels.  
Defy stereotypes. Defy the limits  
of where your journey starts and  
ends. Defy the norm and set a  
new course with the Vios.

# ***ALL-NEW FASTBACK***



Featuring an imposing front end yet rear biased cabin. With a sporty lowered body yet refined for comfort. It's not the Vios you know yet it's unmistakably Vios. Look ahead, not behind. Defy.



More than just illuminating your journey, the Vios projects a distinct presence, on and off the road. From a stately impression at a standstill to a bold appearance in motion.



### LED Headlamps with Auto High Beam and Follow Me Home Function

New sleek design that delivers an unmistakable brightness and improved driving visibility.



### Front Aerodynamic Air Vents

Improves brake cooling performance and reduces drag for better handling and stability.



### 17" Alloy Rims

10 spoke design that radiates out from the centre hub to the outer edge of the wheel.



### Rear Sequential Turn Signal

The sequential signal light provides advanced and premium feel with distinctive illumination.



### Rear Diffuser & Air Canards

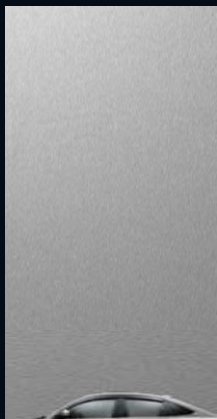
Directs airflow to maintain a low centre of gravity and better traction.

# DEFY IN STYLE

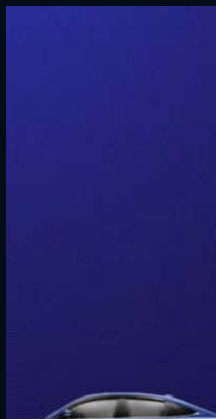


## COLOUR OPTIONS

Silver Metallic  
(1D4)



Nebula Blue  
Metallic (8X2)



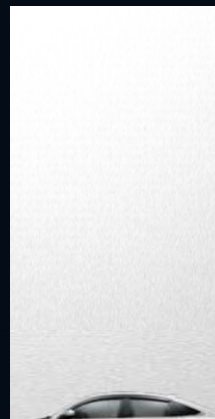
Spicy Scarlet SE  
(R77)



Attitude Black  
(218)



Platinum White  
Pearl (089)





# DEFY WITH FULL CONTROL



## Paddle Shifters

Tuned for a more engaging driving experience. With faster and more precise gear changes.



## 3 Drive Modes

*Power | Eco | Normal*  
Switch between a relaxing and an exhilarating drive.



## New 7-speed CVT with Sequential Shiftmatic

Designed for a more dynamic driving experience in both auto and manual modes. With improved acceleration from more responsive gear changes at every ratio.



## Enhanced Suspension System

Tuned for nimble handling and excellent straight-line stability. With better ride comfort while reducing body roll.



## Toyota DOHC + Dual VVT-i 106 PS | 138 Nm

The engine delivers both improved fuel efficiency and throttle response. Compact and reliable for a spirited drive every day.

# **ALL-NEW PLATFORM**



Toyota's latest and most advanced platform.  
With higher structural rigidity and stability.  
All while remaining lightweight and compact.

It not only improves the overall handling and  
stability but also provides better collision safety.  
With various reinforcements in key areas  
to protect passengers in the event of an accident.



Toyota  
Safety  
Sense



# DEFY WITH CONFIDENCE

Now equipped with a 360°  
suite of advanced safety  
technologies for a safer drive  
for everyone in the Vios.

# 360-T Advanced

Trust & Technology From Toyota

Toyota  
Safety  
Sense

The Toyota Safety Sense (TSS) is packed with active safety features that are designed to protect and prevent through various autonomous measures.

## PRE-COLLISION SYSTEM (PCS)



Uses Stereo Camera to detect potential collisions with other vehicles or pedestrians. Automatically apply the brakes to reduce the severity of a crash or prevent it.

 WARNING  AUTO BRAKE

## ADAPTIVE CRUISE CONTROL (ACC)



Detects speed and distance of vehicles in front to automatically adjust and maintain speed from a safe following distance.

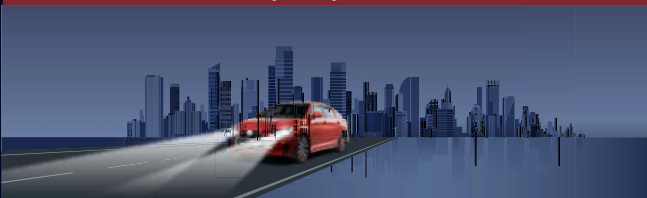
## FRONT DEPARTURE ALERT (FDA)



Automatic notification when the vehicle in front has departed. Alerts the driver via the display and audio buzz.

 WARNING

## AUTO HIGH BEAM (AHB)



Detects headlights of oncoming vehicles and proximity of taillights and switches automatically between low and high beam.

## LANE DEPARTURE WARNING (LDW)



Detects when a vehicle is drifting out of its lane. Alerts the driver via the display and audio buzz.

 WARNING

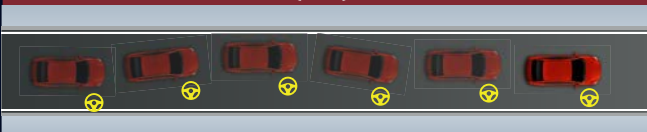
## LANE DEPARTURE PREVENTION (LDP)



Automatically makes corrective steering to help driver keep the vehicle in its lane. Alerts the driver via the display and audio buzz.

 STEERING ASSIST

## LANE KEEPING CONTROL (LKC)



Constantly keeps the vehicle centred in its lane by actively applying slight corrective steering.

 STEERING CONTROL



**WATCH HOW THE TOYOTA  
SAFETY SENSE WORKS.**

Scan code or [CLICK HERE](#)

# SAFE-T

Trust For Smoother Journeys



## 6 Parking Alert Sensors

Ultrasonic sensors on the front and rear that detects and alerts on the proximity of the obstacle.

Front: 2 sensors Rear: 4 sensors



## Blind Spot Monitor (BSM) with Rear Cross Traffic Alert (RCTA)

Detects and alerts of vehicles within the driver's blindspot. Alerts driver of oncoming vehicles from the rear when the reverse gear is activated.



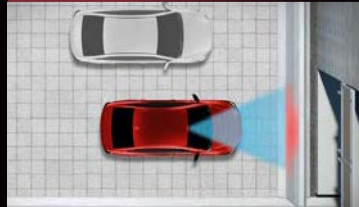
## 6 SRS Airbags

Maximum protection in an event of a collision.



## 3D Panoramic View Monitor (PVM)

360° view of the vehicle with customised display angles for easy manoeuvring or parking in tight spaces.



## Pedal Misoperation Control (PMC)

Avoids frontal collision from a stationary position. Suppress engine output and automatically applies the brake when the system judges accelerator has been mistakenly applied & front obstacle is detected.



## Auto Rain Sensor

Automatically activates the wipers and adjust the wiper speed when rain is detected.



### 9" Display Audio

Wireless Apple CarPlay and Android Auto™

# CONNECTIV-T

Technology at your command



### Front & Rear Digital Video Recorder (DVR)

Convenient access and monitoring via Toyota DVR app.

\*Rear DVR is an optional accessory

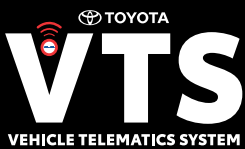


### Wireless Charger

Convenient charging for 'Qi' compliant devices.



### Fast Charging Rear USB Ports



### Vehicle Telematics System (VTS)

Track and monitor your car's location in real time via a Toyota 24SEVEN mobile app.

# GUARAN-T

Total peace of mind



5 years vehicle warranty from the date of first registration with unlimited mileage.

Terms and conditions apply



# DEFY IN PURE COMFORT



## 64-colour Ambient Light

Enhance your drive with a touch of elegance. Choose from 64 colours to create a warm and inviting cabin.



## FINGERTIP CONVENIENCE



### 7" TFT Multi-information Display Digital Meter

Customise your view to match your drive. Switch between 4 types of visual displays from steering wheel.



### Multi-function Leather Steering Wheel



### Electronic Parking Brake (EPB) with Auto Brake Hold (ABH)

No more putting the car in brake when parking or holding down the brake in congested traffic.



### 64-colour Ambient Light Switch

Change your mood with a flick of a button.



### Auto Air-cond

Automatically adjusts the cooling and ventilation by detecting the temperature and humidity inside the cabin.



### Cabin Quietness

The all-new Toyota platform greatly suppresses external noise and vibration. With foam filled cavities and less holes in the body, the result is superior quietness that defies the category.

## ALL-ROUND COMFORT



### Ergonomic Seats

Designed to give the right ergonomics for long drives complemented with premium materials. Optimised not just for maximum support but also maximum headroom as well as the ease of getting in and out of the Vios.



### Rear Air-cond Vent

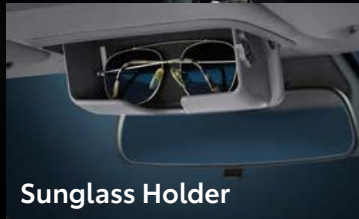
Comfort is enhanced for all passengers with optimum cooling for the rear passengers.



Padded Centre Console Armrest



Front Cupholders



Sunglass Holder



Glove Box



Wide & Deep Boot Space

# TOYOTA EXTRA MILE

Toyota prides itself in keeping its cars longer on the road. But beyond its legendary legacy of durability and reliability is the commitment to go the extra mile for every customer. With a comprehensive network of services and facilities across Malaysia to make every Toyota ownership more convenient than ever.

From delivery to your doorstep to holistic car maintenance assistance services, simpler ownership cost management, and much more.

We're more than just an automobile company, we're a mobility company committed to 'Move Your World'.

## TOYOTA EXTENSIVE SALES & SERVICE NETWORK NATIONWIDE

Conveniently located for easy accessibility to quality service and genuine parts.



Rewards you for every transaction you make at Toyota. Redeem service vouchers and other exclusive merchandise.

## TOYOTA Financial Packages

Selection of financing choices to fit your needs and lifestyle.



All inclusive and comprehensive periodic maintenance checks and schedules.

## TOYOTA Insurance Package

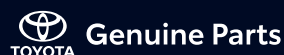
Specially tailored to Toyota owners with exclusive benefits and privileges.



Makes keeping your new Toyota running at its best easy and even more affordable. Choose from 2, 3 or 5 year service packages.

## TOYOTA 247 Road Assist

Dedicated roadside assistance, 24 hours a day, seven days a week. With FREE minor on-the-spot repairs and towing.



Made to Toyota's exacting standards for guaranteed quality, reliability, and durability, that's readily available nationwide.



5 years warranty from the date of first registration with unlimited mileage. Terms and conditions apply.



Energy Efficient Vehicle

Follow us!



toyotamy

- UMW Toyota Motor reserves the right to alter any details of specifications and equipment without notice.
- Details of specifications and equipment are also subject to change to suit local conditions and requirements.
- Vehicle and specifications in this catalogue may vary from models available locally.
- Vehicle body and accessory colours might differ slightly from the printed photos in this catalogue.
- Optional accessories are available at extra cost.
- All images used are for illustrative purposes.

For more information, please contact:

ENGINE			
Model	2NR-VE		
Type	4-cylinder, In-line, 16-valve DOHC with Dual VVT-i		
Displacement	cc	1,496	
Bore & Stroke	mm	72.5 x 90.6	
Compression Ratio	11.5		
Max. Output	KW (PS) / rpm	78 (106) / 6,000	
Max. Torque	Nm / rpm	138 / 4,200	
Top Speed	km/h	180	
Drive Wheel	Front Wheel Drive		
CHASSIS			
Transmission	7-Speed CVT with Sequential Shiftmatic		
Drive Mode	Power / ECO / Normal		
Suspension	Front	McPherson Strut	
	Rear	Torsion Beam	
Brakes	Front	Ventilated Disc	
	Rear	Solid Disc	Drum
Stabilizer Bar	Front	With	
	Rear	With	
Steering Gear Type	Rack & Pinion		
Power Steering Type	Electric Power Steering (EPS)		
DIMENSIONS & WEIGHT			
Overall	Length	mm	4,425
	Width	mm	1,740
	Height	mm	1,480
	Wheelbase	mm	2,620
Kerb Weight	kg	1,035	1,015
Gross Vehicle Weight	kg	1,460	
Fuel Tank Capacity	Litre	40	
Boot Capacity	Litre	475	
Min. Turning Radius	Meter	5.2	4.8
EXTERIOR			
Headlamps	Type	Auto LED with Follow Me Home Function	
	Leveling	Manual	
	LED Daytime Running Light	With	
Rear Combination Lamp	LED with Sequential Turn Signal	LED Combination	
Windshield Wiper	Rain Sensing Type	Intermittent Only	
Outside Rear View Mirror	Power-adjustable, Auto Fold, Signal Lamps & Blind Spot Monitor		
Remote Trunk Release	With		
Outside Door Handle	Body Colour		
Tyres & Rims (including Spare Tyre)	205/50/R17, Alloy	195/60/R16, Alloy	
Front Grille	Piano Black	Black	
Antenna	Shark Fin		
Aerokits	With		
RFID	With		
Lower Back & Back Door Garnish	Black		
Quarter Window Moulding	Chrome	Black	
Door Belt Moulding	Chrome	Black	
Acoustic Windshield Glass	With		
INTERIOR			
Interior Colour	Black & Dark Brown		
Steering	Type	Leather	Urethane
	Tilt and Telescopic	With	Tilt Only
	Multi - Function	Audio, MID, Bluetooth, ACC, Drive Mode & LKA	Audio, MID, Bluetooth & Drive Mode
	Paddle Shifter	With	Without
Meter Combination Illumination	Digital		Optitron
Multi Information Display (MID)	7" TFT		4.2" TFT
Illumination Entry System	With 64-Colour Ambient Light		With
Air-Conditioner	Front	Auto A/C	
	Rear Air Vent	With	
Lamps	Front Personal Lamp	LED	With
	Room Lamp	LED	With
	Luggage Room Lamp	With	
	Door Courtesy Lamp	With	

Smart Entry & Push Start System		With
Inside Rear View Mirror		Day & Night
Wireless Charger		With
Illuminated Scuff Plate		With
Front Foot Illumination		With
Sun Visor	Driver	With Mirror
	Front Passenger	With
Door Arm Rest		Soft Pad
Parking Brake		Electronic Parking Brake with Auto Brake Hold
Power Window	Driver	With Auto Up/Down & Jam Protection
	Front Passenger	With
	Rear	With
Carpet Mat		With
Audio System	Type	9" Display Audio with Wireless Apple CarPlay & Android Auto™
	Speaker	6
USB Charging Port		3
Shift Lever/Knob		Leather
Seat Material		Leather
Storage	Glove Compartment	With
	Coin Pocket	With
	Cup & Bottle Holders	6
	Folder Holder	With
	Centre Console Box	Soft Pad
	Sunglass Holder	With
Foot Rest		With
Luggage Tray		With
Assist Grip		3

## SAFETY

<i>(Active)</i>		
Toyota Safety Sense (TSS)	Pre-Collision System (PCS)	With
	Lane Departure Warning (LDW)	With
	Lane Departure Prevention (LDP)	With
	Front Departure Alert (FDA)	With
	Lane Keeping Control (LKC)	With
	Auto High Beam (AHB)	With
Adaptive Cruise Control (ACC)	With	
Pedal Misoperation Control (PMC)		With
3D Panoramic View Monitor (3D PVM)		With
Blind Spot Monitor (BSM) with Rear Cross Traffic Alert (RCTA)		With
Front Digital Video Recorder (DVR)		With Smartphone Connectivity
Emergency Stop Signal (ESS)		With
Anti-Lock Braking System (ABS)		With
Brake Assist (BA)		With
Vehicle Stability Control System (VSC)		With
Traction Control (TRC)		With
Electronic Brake-force Distribution (EBD)		With
Hill-Start Assist (HSA)		With
Auto Door Lock		With
Parking Clearance Sonar		With (2 Front, 4 Rear)
<i>(Passive)</i>		
SRS Airbags		6
Seatbelts	Driver	3-Point ELR with Pretensioner & Force Limiter
	Front Passenger	3-Point ELR with Pretensioner & Force Limiter
	Rear	3-Point ELR (3 Pax)
	Warning Reminder	Driver, Front Passenger & Rear Passengers
Child Seat ISOFIX		With

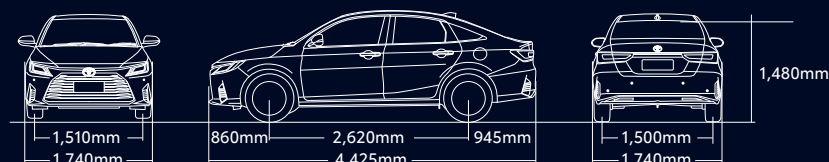
## SECURITY

Security System		Horn Alarm with Immobiliser
Premium Security & Solar Film		With
Vehicle Telematics System (VTS)		With 3-year Free Subscription

## OPTIONAL

Rear Digital Video Recorder (DVR)		Optional
-----------------------------------	--	----------

## DIMENSIONS



Dimensions apply to the 1.5G variant only.